

FireFinder® XLS

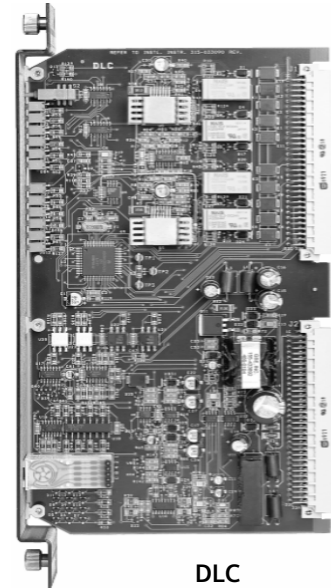
Device Loop Card Model DLC

ARCHITECT AND ENGINEER SPECIFICATIONS

- Quantity 252 addressable points
- Provides two (2) intelligent addressable circuits
- Compatible with 'H'-series, Desigo® Fire Safety-series and Cerberus® PRO-series of intelligent detectors
 - Multi-criteria / Carbon Monoxide (CO) Detector with **ASAt**technology™
 - Multi-criteria Detector
 - Multi-criteria Detector with **ASAt**technology
 - Photoelectric Smoke detector
 - Quad Interface module
 - Thermal (Heat) detector
- Polarity insensitive via **SureWire™** technology
- Quantity 12 diagnostic light-emitting diodes (LEDs) for easy circuit diagnosis
- Onboard microprocessor for dependable, efficient device communication
- Supports T-Tapping
- Supports 'Class B' or 'Class A' wiring
- Onboard, ground-fault detection and short-circuit isolation
- Degradate mode
- **UL 864 9th Edition Listed & ULC Listed;**
FM, CSFM & NYC Fire Department Approved



DLC
[Front View]



DLC
[Side View]

Product Overview

The Device Loop Card (Model DLC) is the interface used for connection of Desigo and Cerberus PRO intelligent detectors and initiating devices to a single FireFinder XLS fire-alarm control panel (FACP). Model DLC also can work with Siemens input devices, manual stations and control devices.

Each Model DLC plugs into one (1) slot of the Model CC-2 or Model CC-5 card cage. Programming for Model DLC is accomplished via the XLS FACP custom-configuration tool, Zeus. Model DLC takes one (1) address on the network, communicating up to a total 252 detectors and devices. Model DLC has 12 LEDs for diagnostic purposes, and provides ground-fault detection and zone-isolation circuitry.

Specifications

Model DLC initializes, operates and maintains all devices residing on its two (2) circuits. Model DLC communicates all relevant device and event information (*Alarm*, *Trouble* and *Supervisory* commands) to FireFinder XLS, and supervises the device loop circuit.

Model DLC is polarity insensitive via **SureWire** technology, which greatly reduces commissioning time normally spent tracing down crossed-field wiring. Model DLC communicates detector information, such as sensitivity of intelligent fire detectors and logic-function data, to the Person Machine Interface, which is located within the FireFinder XLS system.

Each device loop card supports two (2), isolated circuits up to a total of 252 addressable devices – as well as relay and audible bases; remote lamps, and duct-detector housings in any combination. The microprocessor controls the onboard isolation in case there is a short in any of the circuits, thus allowing the other circuit to continue operating.

For continuous protection, the onboard microprocessor continues to operate even in the event of a XLS CPU failure.

Temperature and Humidity Range

The Device Loop Card is ®UL 864 9th Edition Listed for indoor dry locations within a temperature range of 120+/-3°F (49+/-2°C) to 32+/-3°F (0+/-2°C) and a relative humidity of 93+/-2% at a temperature of 90+/-3°F (32+/-2°C).

Electrical Ratings

24V Current Draw: [Backplane]	0
24V Current Draw: [Screw Terminal]	100mA + 1.4mA per device
24V Current Draw: [Standby]	145mA + 1.8mA per device
6.2V Current Draw: [Backplane]	200mA
Device Loop Draw: [at 30VDC, max]	375mA, max. [power limited]

Details for Ordering

— Desigo Series —

Model	Part Number	Description
FDCIO422	S54322-F4-A1	Quad Interface Module
FDOT421	S54320-F6-A1	Addressable Multi-Criteria Detector
FDO421	S54320-F4-A1	Photoelectric Smoke Detector
FDT421	S54320-F5-A1	Thermal (Heat) Detector
FDOOTC441	S54320-F8-A1	Multi-Criteria Fire / CO Detector w/ ASAtechnology
FDOOT441	S54320-F7-A1	Multi-Criteria Fire Detector w/ ASAtechnology

Details for Ordering — (continued)

— 'H'-Series —

Model	Part Number	Description
HFP-11	500-033290	<i>FirePrint</i> Detector
HFPT-11	500-033380	Thermal Detector
HMS-D	500-033400	Dual-Action Manual Station
HMS-M	500-033450	Manual Station, Metal
HMS-S	500-033200	Single-Action Manual Station
HTRI-D	500-033360	Dual-Input Module
HTRI-M	500-034000	Mini-Input Module
HTRI-R	500-033300	Single-Input w/ Relay
HTRI-S	500-033370	Single-Input Module

— In Canada, order:

Model	Part Number	Description
HMS-SA	500-034150	Single-Action Manual Station (Auxiliary Contact)
HMS-2S	500-033460	Two-Stage Manual Station

— Cerberus PRO Series —

Model	Part Number	Description
FDCIO422	S54322-F4-A1	Quad Interface Module
HI921	S54320-F5-A2	Thermal (Heat) Detector
OH921	S54320-F6-A2	Addressable Multi-Criteria Detector
OP921	S54320-F4-A2	Photoelectric Smoke Detector
OOHC941	S54320-F8-A2	Multi-Criteria Fire / CO Detector w/ ASAtechnology
OOH941	S54320-F7-A2	Multi-Criteria Fire Detector w/ ASAtechnology

— Other Modules and Devices —

Model	Part Number	Description
ILED-HC	500-048637	Intelligent Remote Lamp, Ceiling Mount
ILED-HW	500-048809	Intelligent Remote Lamp, Wall Mount
DLC	500-033090	Device Loop Card
PMI-2	S54430-C1-A1	Person Machine Interface 2

Notice: This marketing data sheet is not intended to be used for system design or installation purposes. For the most up-to-date information, refer to each product's installation instructions.