

Honeywell

equiP® Series 720p/1080p Indoor IP Micro Dome Camera

Quick Installation Guide

Document 800-15436V3 — Rev B — 06/2014

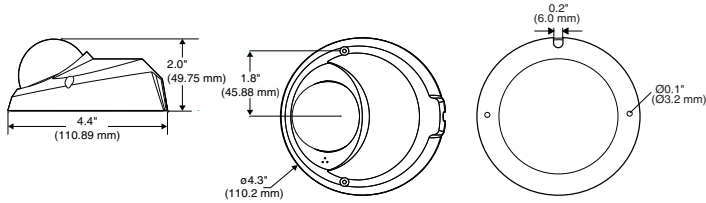


Introduction

Thank you for purchasing a Honeywell equiP Series 720p/1080p Indoor IP Micro Dome Camera. Before installing this camera, please carefully read this guide and verify your model:

**H2S1P6(X):** 720p resolution, 4.0 mm lens micro dome IP camera

**H2S2P6(X):** 1080p resolution, 4.0 mm lens micro dome IP camera



For detailed information about your specific camera, please refer to the appropriate user guide located on the software and documentation CD.

Cautions and Warnings

	<b>CAUTION</b> RISK OF ELECTRIC SHOCK DO NOT OPEN			THIS SYMBOL INDICATES THAT DANGEROUS VOLTAGE CONSTITUTING A RISK OF ELECTRIC SHOCK IS PRESENT WITHIN THE UNIT.
CAUTION: TO REDUCE THE RISK OF ELECTRIC SHOCK, DO NOT REMOVE THE COVER. NO USER-SERVICEABLE PARTS INSIDE. REFER SERVICING TO QUALIFIED SERVICE PERSONNEL.			THIS SYMBOL INDICATES THAT IMPORTANT OPERATING AND MAINTENANCE INSTRUCTIONS ACCOMPANY THIS UNIT.	

**CAUTION** Installation and servicing should be performed only by qualified and experienced technicians to conform to all local codes and to maintain your warranty.

**CAUTION** Risk of explosion if Battery is replaced by an incorrect type. Dispose of used batteries in accordance to local laws.

Operating Notes

**Power Supply** This micro dome camera operates on PoE.

Operating Conditions

Avoid:

- Viewing bright objects (for example, light fixtures), for extended periods
- Operating or storing the unit in the following locations:
  - Extremely humid, dusty, hot/cold environments (where the operating temperature is outside the recommended range of 14°F – 122°F [-10°C – 50°C])
  - Close to sources of powerful electromagnetic radiation, such as radio or TV transmitters
  - Close to fluorescent lamps or objects reflecting light
  - Under unstable light sources (might cause flickering)

Important Safeguards

- Read and keep these instructions.
- Please ensure that your installation area can safely support the weight of the camera.
- Do not install the camera in extreme temperature conditions. Only use the camera where temperatures are within the limits shown in the Specifications section of the User Guide. Be especially careful to provide ventilation when operating under high temperatures.
- Do not aim the camera towards an extreme light source, to prevent damaging the imager.
- This camera is rated for indoor operation; do not expose this camera to rain or moisture.
- Do not touch the camera lens, dome, or bezel (front glass plate).
- Do not drop the camera or subject it to physical shock.
- Do not use a strong or abrasive detergent when cleaning the camera.

1 Installing the Camera

Before You Begin

Before you begin, check that you have received all of the parts listed below. If any parts are missing or damaged, contact your dealer immediately.

- One micro dome camera
- One software CD (that includes the User Guide)
- One hardware kit
- This Quick Installation guide

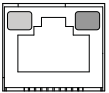
Installing the Camera

- Using the provided Allen key (see the hardware kit), loosen the screws on the camera cover, then remove the camera cover and set aside.



- (Optional) Insert the microSDHC card into the card slot if you want to use a microSDHC card to record video clips. The equiP Series IP cameras support microSDHC cards of up to 32 GB. Push the card into the slot until it clicks into place. To remove a microSDHC card, push it in to release it from the slot, then pull it the rest of the way out. See [Clip Storage on microSDHC Card](#) for information on using the microSDHC card with your IP camera system.
- Using the provided screws (and possibly the provided, optional drywall anchors), mount the camera on the desired ceiling or wall.
- Connect a CAT5 Ethernet cable to the end of the cable on the camera and then to a Power Sourcing Equipment (PSE) such as a router or a switch.

**Note** Check the status of the link indicator and the activity indicator LEDs. If these LEDs remain unlit, please check the LAN connection.



An orange activity light (left) flashes to indicate network activity.  
A steady green link light (right) indicates a good network connection.

**WARNING** This product is intended to be powered by Listed ITE with Power Over Ethernet rated 48 V DC / 300 mA.

**Note** To adjust the camera's field of view, you will have to search for it on the network, log in to it, and then view live video through the web client.

## 2 Logging in to the Camera

### Before You Log In to the Camera

Before logging in to the camera, ensure that your PC meets the following system requirements:

<b>Operating System</b>	Windows XP, Windows Vista, Windows 7 (32-/64-bit)
<b>CPU</b>	Intel Pentium M, 2.16 GHz; or Intel Core 2 Duo, 2.0 GHz
<b>System Memory</b>	2 GB or more
<b>Network Card</b>	Minimum: 10Base-T (10 Mbps); Recommended: 100Base-TX (100 Mbps)
<b>Web Browser</b>	Microsoft Internet Explorer 6.0 or later, Google Chrome, Mozilla Firefox, Apple Safari

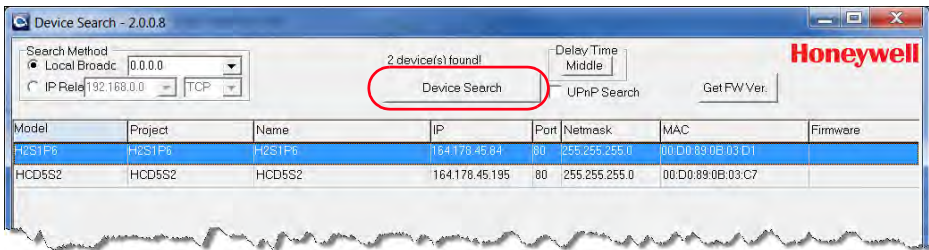
To run the web client application, you must have Windows administrator privileges and your browser must be set up to allow ActiveX controls (refer to the *equiP® Series IP Cameras Configuration Guide* on the software and documentation CD for more information).

### Logging In to the Camera

1. Power up the camera through the PoE connection.
2. Insert the installation disc into your disc drive and navigate to the Honeywell Device Search folder.

If you want, you can copy the Device Search executable file to your computer desktop (or other location) to run the Device Search application without the installation disc.

3. Double-click the Honeywell **Device Search** icon to run the application on your PC.



4. Click **Device Search** to find the camera with the Honeywell Device Search tool. By default, the camera has a dynamically assigned IP address (DHCP). After finding the camera with the Device Search tool, you can assign a static IP address to the camera, or otherwise modify the network settings, as needed (refer to the *equiP® Series IP Cameras Configuration Guide* on the software and documentation CD for more information).
5. Double-click the discovered camera, or enter the camera's IP address into the address bar of your web browser.
6. In the Login dialog box, enter the default user name (**admin**) and password (**1234**) and then click **OK**. The user name is case sensitive.

The first time you run the Honeywell Viewer web client, you will be prompted to install an ActiveX plug-in. Follow the on-screen instructions to install the plug-in. Once the plug-in has been installed, the web client opens automatically in your browser, displaying live video and basic controls. Refer to the *equiP® Series IP Cameras Configuration Guide* on the software and documentation CD for more information on using the Honeywell Viewer web client.

## 3 Completing the Camera Installation

### Adjusting the Field of View

After logging in to the camera, and while observing the live video on the web client, adjust the camera's field of view by rotating the gimbal in two directions.

### Replacing the Micro Dome Cover

Use the supplied Allen key to secure the camera cover.

## Optional Clip Storage on MicroSDHC Card

### Preparing to Use the MicroSDHC Card

Install the microSDHC card in the card slot before you finish installing the camera (see *Installing the Camera*). Log on to the camera with the web client (see *Logging in to the Camera*).

**Note** If needed, you can format the microSDHC card to erase the contents (**System** ➤ **Storage Management** ➤ **SD Card** ➤ **Device setting**, and click **Format**). You can also set up automatic deleting of old clips from the microSDHC card with the **Disk cleanup setting**.

**Note** To record audio to the microSDHC card with the video, enable that option in **Streaming** ➤ **Audio**.

### Configuring MicroSDHC Card Recording

Set up recording(s) to the microSDHC card (types of recording available include: Continuous, Scheduled, Alarm Triggered, Motion Triggered, Network Failure Triggered, and Tampering Triggered recording). Set up the recording parameters, as needed. Select the **SD Card** in either the **Record To** or **Recording Storage** option when configuring the selected recording type.

**Note** For more information on Alarms, Events, and Recording settings, refer to the *equiP Series IP Cameras Configuration Guide* included on the software and documentation CD.

### Downloading and Playing Clips Recorded to a MicroSDHC Card

1. Go to **System** ➤ **Storage Management** ➤ **SD Card**. The list of video clips (in AVI format) is in the **Recording list** section at the bottom of the page.

**Note** If needed, you can click **Sort** to change the order that the video clips are sorted in (can be sorted by date or recording type).

2. Select a clip from the list and click **download**.
3. You can choose to either **Open** or **Save** the file. Select **Open** to immediately play the clip with your default video player after it has downloaded. Select **Save** to save the file to a location on your hard drive. Once saved you can use the file as needed (distribute and/or play the clip).

### Deleting Clips from a MicroSDHC Card

There are three options for deleting video clips from a microSDHC card:

- Format the card, deleting all clips from the microSDHC card (**System** ➤ **Storage Management** ➤ **SD Card** ➤ **Device setting**, and click **Format**).
- Set up **automatic disk cleanup**, to delete clips of a certain age when the card storage reaches a specified capacity (**System** ➤ **Storage Management** ➤ **SD Card** ➤ **Disk cleanup setting**).
- Remove the clips, one at a time (**System** ➤ **Storage Management** ➤ **SD Card** ➤ **Recording list**; select one or more clips from the recording list and click **Remove**).

## Regulatory Statements

### FCC Statement of Compliance

**Information to the User:** This equipment has been tested and found to comply with the limits for a Class A digital device, pursuant to part 15 of the FCC Rules. These limits are designed to provide reasonable protection against harmful interference when the equipment is operated in a commercial environment. This equipment generates, uses, and can radiate radio frequency energy and, if not installed and used in accordance with the instruction manual, may cause harmful interference to radio communications. Operation of this equipment in a residential area is likely to cause harmful interference in which case the user will be required to correct the interference at his own expense.

**Note** Changes or modifications not expressly approved by the party responsible for compliance could void the user's authority to operate the equipment.

This Class A digital apparatus complies with Canadian ICES-003.  
Cet appareil numérique de la Classe A est conforme à la norme NMB-003 du Canada.

### Manufacturer's Declaration of Conformance

#### North America

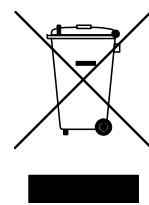
The equipment supplied with this guide conforms to UL 60950-1 and CSA C22.2 No. 60950-1.

#### Europe

The manufacturer declares that the equipment supplied with this guide is compliant with the European Parliament and Council Directive on the Restrictions of the use of certain hazardous substances in electrical and electronic equipment (2011/65/EU), General Product Safety Directive (2001/95/EC), and the essential requirements of the EMC Directive (2004/108/EC), conforming to the requirements of standards EN 55022 for emissions, EN 50130-4 for immunity, and EN 60950-1 for electrical equipment safety.

**WARNING** This is a Class A product. In a domestic environment this product may cause radio interference in which case the user may be required to take adequate measures.

### Waste Electrical and Electronic Equipment (WEEE)



**Correct Disposal of this Product** (applicable in the European Union and other European countries with separate collection systems).

This product should be disposed of, at the end of its useful life, as per applicable local laws, regulations, and procedures.

# Honeywell

[www.honeywell.com/security](http://www.honeywell.com/security)  
+ 1 800 323 4576 (North America only)  
<https://www.honeywellsystems.com/ss/techsupp/index.html>