

Addressable Two-Wire Interface Module

IDP-Zone

The IDP-Zone is an addressable two-wire interface module for use with Silent Knight IFP-series fire alarm control panels (FACPs). The IDP-Zone allows a Silent Knight FACP to interface and monitor two-wire conventional smoke detectors. This means you can retrofit an existing building and use existing conventional devices.

The IDP-Zone is addressed through the signaling line circuit loop of the FACP. It transmits the status of one full zone of two-wire detectors to the FACP. Status conditions are reported as normal, open, or alarm. The IDP-Zone supervises the zone of detectors and the connection of the external power supply.

All two-wire detectors being monitored must be UL compatible with the IDP-Zone.

Features

- Converts a conventional two-wire loop to an SLC loop
- Fully supervised
- Support for Style B and Style D wiring
- Panel controlled status LED that flashes green in normal state and is solid red in alarm
- Attractive ivory cover plate
- Rotary address switches for fast installation
- SEMS screws for easy wiring
- UL Listed

Installation

The IDP-Zone mounts directly into a 4" square electrical box. The box must have a minimum depth of 2-1/8". A surface mount electrical box (System Sensor® PN SMB500) is available from Silent Knight.

Agency Listings



MEA
386-02-E Vol 2



IDP-Zone

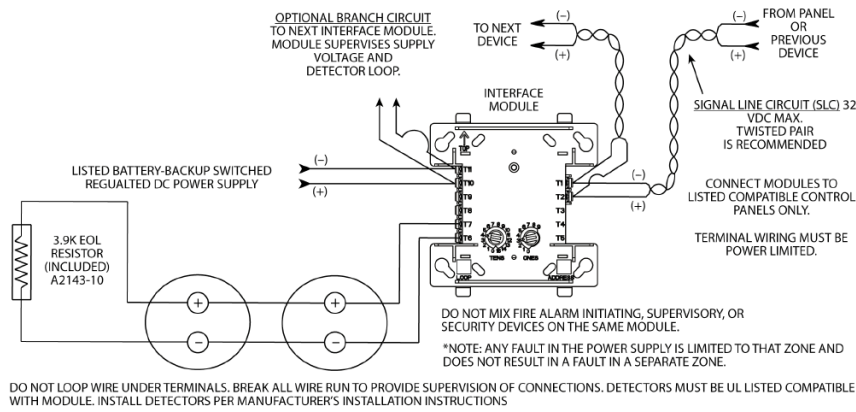
Compatibility

The IDP-Zone is compatible with the following FACPs:

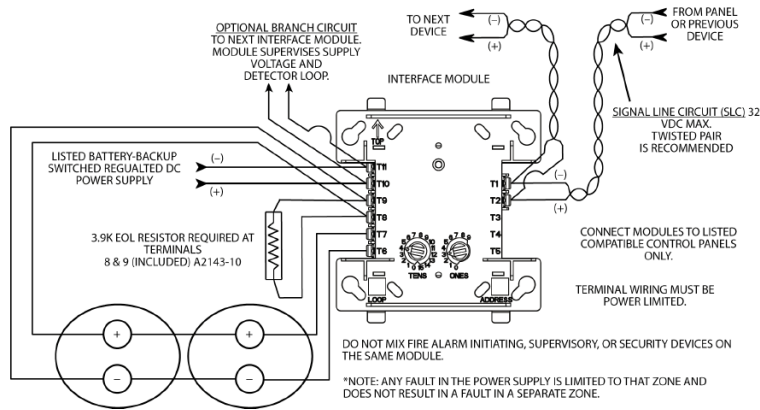
- IFP-2000 / RPS-2000 Intelligent Fire Panel
- IFP-2000ECS Emergency Communication System with Fire Panel
- IFP-1000 / ECS Intelligent Fire Panel
- IFP-100 / ECS Intelligent Fire Panel
- IFP-50 Intelligent Fire Panel

For a list of detectors compatible with the IDP-Zone see the IDP-Zone Installation Instructions (PN K200-12-00).

Interface two-wire conventional detectors, NFPA Style B



Interface two-wire conventional detectors, NFPA Style D



Specifications

Physical

4½" H x 4" W x 1¼" D (11.5 x 10.2 x 3.2 cm)

Shipping Weight: 6.3 oz (196 g)

Environmental

Operating Temperature: 32°F – 120°F (0°C – 49°C)

Humidity: 10% – 93% non-condensing

Electrical

Operating Voltage: 15 – 32 VDC

External Power Supply

Alarm Current: 90mA per module

Standby Current: 12mA @ 24 VDC (nominal)

SLC Standby & Alarm Current: 300 µA

End-of-Line Resistance: 3.9kΩ

SLC Loop Impedance: 40Ω

Initiating Device Circuit Wiring Resistance: 25Ω max

Ordering Information

IDP-Zone

Accessories

SMB500

Two-Wire Interface Module

4" Square Surface Mount Electrical Box



SILENT KNIGHT

by Honeywell

This document is not intended to be used for installation purposes. We try to keep our product information up-to-date and accurate. We cannot cover all specific applications or anticipate all requirements. All specifications are subject to change without notice. For more information, contact Silent Knight 12 Clintonville Road, Northford, CT 06472-1610 Phone: (800) 328-0103, Fax: (203) 484-7118.

For Technical Support, Please call 800-446-6444. www.farenhyt.com