

AMX ALARM MANAGEMENT SYSTEM

PRODUCT OVERVIEW

AMX is a pictorial and textual aid for managing alarm activations in your work place. It can be programmed to suit any applications including: Hospitals, Universities, Prisons, Hotels, Industrial and Commercial buildings. In an emergency, both information and control are paramount, without knowing what has occurred and where it happens it is difficult to provide an effective resolution of the situation.

AMX is designed to present the information in a simple, clear and user friendly way, allowing rapid comprehension of the situation. In addition to the basic function of displaying alarms at a common location, the system also offers the ability to record and analyse both alarms and non-alarm events. This provides the building's engineers or management with the tools they need to analyse alarms, faults, review events, assess problems and plan their maintenance and false alarm prevention strategies AMX is designed to present information in a simple, clear and user friendly environment. Alarm information can be presented to users as both graphical and text instructions, allowing rapid comprehension of the situation. Clear, concise information and instructions with optional control functions are available to manage the incident. (Visualise the situation.) With the latest edition of our remote monitoring units, it is now possible to connect the serial data from the panels via an ethernet connection utilising the local area network or communication via Interweb.

This new way of connecting the workstation to the fire system allows users to have real time event information, enabling them to proactively manage their system and receive vital system data no matter where they're located. Incident Management Incident management is just one element provided by the system, AMX allows you to document and audit the history of the system using the powerful comprehensive logging facilities. Classify each alarm according to it's nature – False alarm due to burnt toast, False alarm with good intentions, etc. Utilise the built in classifications or create your own. Highlight areas that generate the highest number of alarms to improve your system's performance.



Caption Lorem Ipsum is simply dummy

FEATURES AND BENEFITS



Secure System



Multiple Users



Multiple PC Workstations



Image, Plan or Text Displays



Simple Navigation and Control



Current Event List



In-Depth History Analysis



Integrates with ZXSe Series Control Panels



Windows™ 7 and 8 Compatible

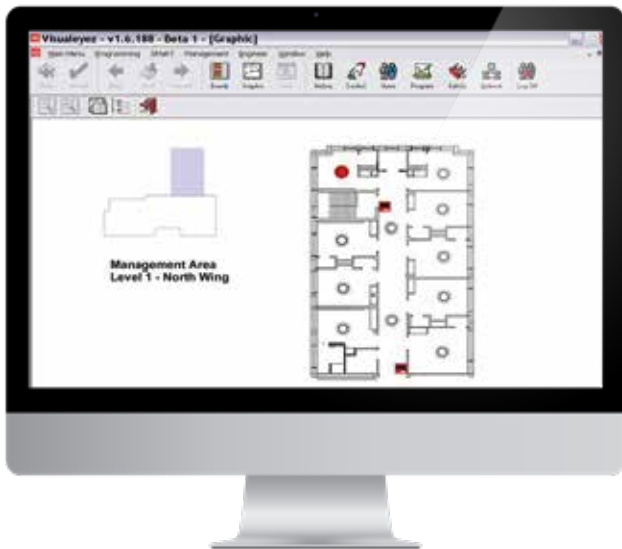


Choice of Specification



Remote System connectivity (additional hardware required)

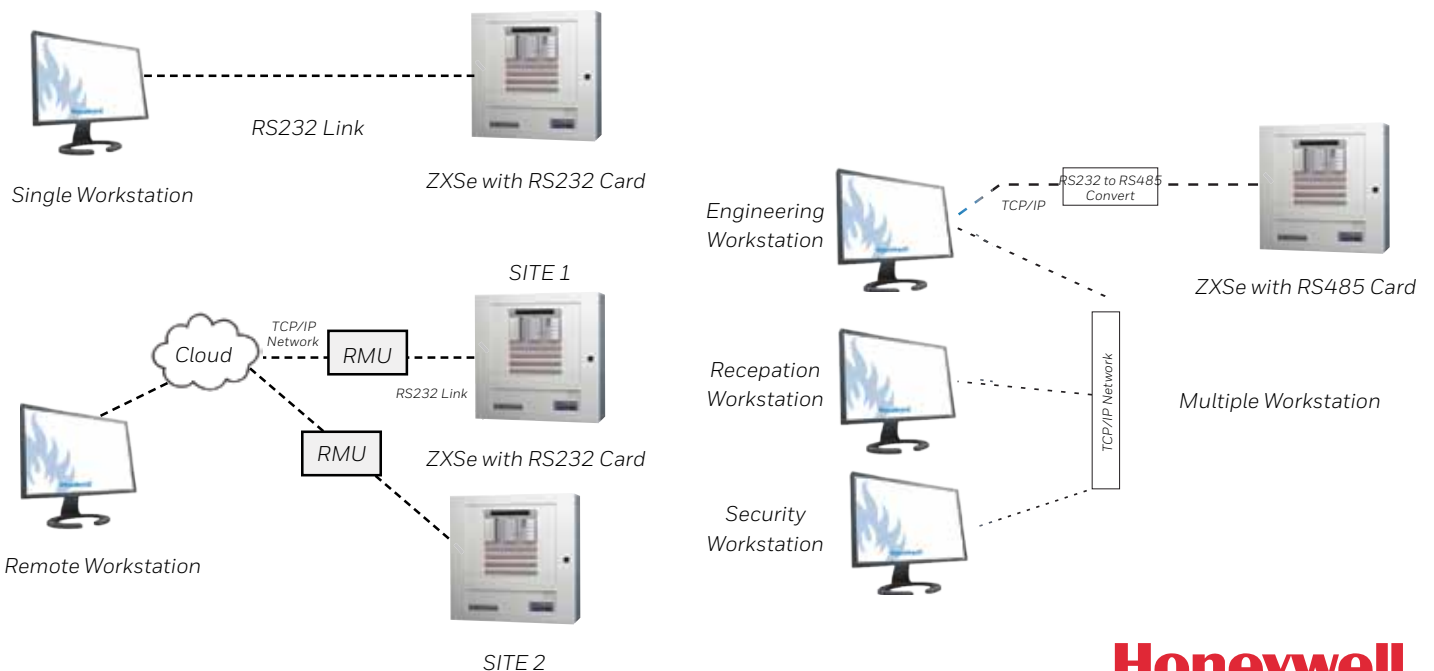
AMX is designed to present information in a simple, clear and user friendly environment. Alarm information can be presented to users as both graphical and text instructions, allowing rapid comprehension of the situation.



Clear, concise information and instructions with optional control functions are available to manage the incident. (Visualise the situation.)

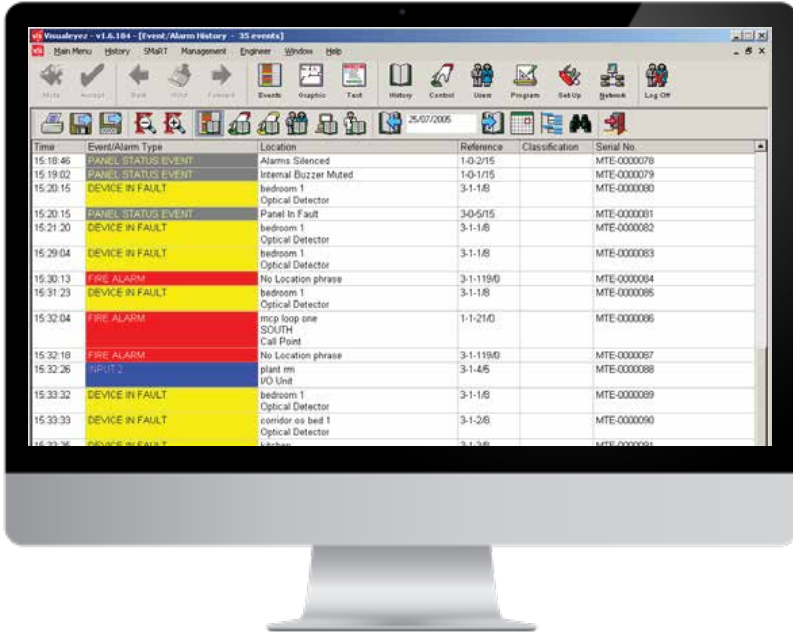
INSTALLATION

The system is available in a number of standard configurations, providing a cost effective configurable solution to suit your project requirements. Fire panel compatibility and seamless integration with the ZXSe range of fire alarm control panels is easily achieved, simplifying setup and programming thereby reducing commissioning costs. Communication between the fire alarm control panel and PC is constantly monitored providing instant warning of a possible systems fault. It can be programmed to suit most application including Hospitals, Universities, Prisons, Hotels, Commercial Buildings, Factories and Museums.



INCIDENT MANAGEMENT

Incident management is just one element provided by the system, AMX allows you to document and audit the history of the system using the powerful comprehensive logging facilities. Classify each alarm according to it's nature – False alarm due to burnt toast, False alarm with good intentions, etc ... Utilise the built in classifications or create your own. Highlight areas that generate the highest number of alarms to improve your system's performance.



Remote Connectivity

With the latest edition of our remote monitoring units, it is now possible to connect the serial data from the panels via an ethernet connection utilising the local area network or communication via Interweb. This new way of connecting the workstation to the fire system allows users to have real time event information, enabling them to proactively manage their system and receive vital system data no matter where they're located.

PC SPECIFICATION (STANDALONE)

PROCESSOR	Intel Pentium or equivalent 2 GHz or better 64 bit
OPERATING SYSTEM	Windows 8, Windows 10
MEMORY	1 GB min.
DISK SPACE	1 TB minimum
GRAPHICS	16 million colours
SOUND CARD	Windows Compatible
LOUDSPEAKERS	Any amplifier and speakers
MONITOR	Any
POINTING DEVICE	A mouse is essential
PRINTER	Optional
RS 232 SERIAL PORTS	1-6 (application dependant)
RS 485 SERIAL PORTS	Subject to system configuration
LAN PORT	Optional
USB POR	One minimum
CD ROM	Yes
BACKUP DEVICE	External disk or USB memory stick (flash drive)
PCI EXPANSION	Only for RS484 interfaces

PART NUMBERS

SOFTWARE AND DONGLE PACKAGES

ZXAMXL1	Morley ZXse AMX Level 1 (1 panel) software and regular licence enables the display of key information from their analogue addressable fire detection and fire alarm system. Can be upgraded with the features below to extend the software capabilities.
ZXAMXL2	Morley ZXse AMX Level 2 (up to 3 panels) software and regular licence enables the display of key information from their analogue addressable fire detection and fire alarm system. Can be upgraded with the features below to extend the software capabilities.
ZXAMXL3	Morley ZXse AMX Level 3 (up to 16 panels) software and regular licence enables the display of key information from their analogue addressable fire detection and fire alarm system. Can be upgraded with the features below to extend the software capabilities.
ZXAMXL4	Morley ZXse AMX Level 4 (up to 99 panels) software and regular licence enables the display of key information from their analogue addressable fire detection and fire alarm system. Can be upgraded with the features below to extend the software capabilities.

REMOTE CONNECTION HARDWARE

ZXSWMK1	Morley Zxse RMU Module Kit. Provides an IP interface from your panel to your AMX graphics package. Supports a a single panel only.
ZXSWMK5	Morley ZXse RMU Module Kit. Provides an IP interface from your panels to your AMX graphics package. Supports a network of two to five panels.
ZXSWMK15	Morley Zxse RMU Module Kit. Provides an IP interface from your panels to your AMX graphics package. Supports a network of six to fifteen panels.

SOFTWARE UPGRADE PACKAGES

AMXAUTOUPGR	Graphics Auto Update upgrade, When more than one AMX is connected in a group the standard practice when upgrading one is to take a backup and travel to each terminal to restore each one independently. The new auto update module allows a user to makes changes on one master AMX and propagates the changes to any other master/slave connected via groups. This mimics a client/server application and drastically reduces upgrade times. Admin charge also needs to be added if ordered as an upgrade.
AMXSERVUPGR	Graphics Service & History upgrade allows users to produce service reports which accurately show the total percentage of devices being tested on an annual basis. This module can be used by both the end user and Service provider as a way to demonstrate value adds and commitment to testing 100% of sites devices. Admin charge also needs to be added if ordered as an upgrade.
AMXEMAILUPGR	Graphics Email upgrade, AMX is now capable of send emails when an event occurs. Each event can be sent to a multitude of addresses. This means for example that Fire events can be sent to person A,B and C whilst faults are sent to person X, Y and Z. Email can be configured to only be sent during certain times. Two types of email can be sent. Either a single alarm message or a generalised overview of alarms in a certain period of time. Admin charge also needs to be added if ordered as an upgrade.
AMXSLAVEUPGR	Graphics Slave Licence per slave upgrade, A slave is a Non control version of the AMX. A slave will allow for 24 hour, real time monitoring from a master terminal with reporting and accept alarm capabilities but will not allow control of the panel and devices. A slave will gather its information from a master and cannot be connected to a panel or panel network. A licence is required for each additional station required to be connected to the master. Admin charge also needs to be added if ordered as an upgrade.

For more information,

www.honeywellbuildings.in

Call: 1-800-103-0339

Email: HBT-Indiabuildings@honeywell.com

Honeywell HBT India Buildings

Unitech Trade Center, 5th Floor, Sector-43,
Block C, Sushant Lok Phase - I,
Gurgaon - 122 002.

©2020 Honeywell International Inc.

**THE
FUTURE
IS
WHAT
WE
MAKE IT**

Honeywell