

TG-SQL

Graphic Management Software

The TG graphic software allows you to easily and quickly manage any incident that occurs in one or more fire alarm control panels that are being supervised by the computer on which the TG, Graphic Terminal, management application is installed.



The TG graphic software with SQL database provides greater speed, robustness and power in the distribution of databases to other event display devices (networks).

From the TG, it is possible to read the status of each sensor and input or output module, so you can immediately know if they are in alarm, fault, what the description of the type of fault is, etc. In the case of control modules and sounders, an activation or silence can be carried out.

All analogue control panels have an RS232 serial communications port, which is used to transmit events to the management software. This connection can be direct to the serial port of the computer (15 metres according to the RS232C standard) or, depending on the control panel and its software version, the connection can be made via the IP protocol through the company's own Intranet network (LAN) to any point in the world.

The software has up to 128 individually configurable access levels for each of the users, limiting the possible actions.

The simulation option allows you to select one or several events and simulate their action in order to visualise the changes in map or location of the equipment.

The TG software allows links to be made between maps by zooming in and out between different screens.

In the event of an alarm or fault, the software will change to the map where the device is located or to the initial map, indicating the route to follow to reach the point.

Fire extinguishers, fire hose hydrants, evacuation routes, etc. can also be located on the TG maps.

The status is indicated and additional information is provided to optimize fire alarm and pre-alarm notification.

CONNECTION TYPES

There are different types of connection between the control panels and the graphic software:

1. Direct connection between the RS232 serial port of the control panel (DB9) and the RS232 serial port of the computer.

This connection allows connecting as many control panels as serial ports available on the computer.

The number of RS232 serial ports can be extended by using RS232 to USB converters. If the distance between the control panel and the computer exceeds the distance indicated by the EIA-232C standard (15 metres), RS232 amplifiers can be used, reaching distances of more than several kilometres.

2. Secure, encrypted connection for up to 10,000 control panels via IP, using Honeywell's RS232 to RJ45 (IP) converter, TG-IP1-SEC, for networks operating at 10/100 Mbs.

In this case, the computer will receive all information via its RJ45 network card.

3. Connection of several control panels directly to the serial port, others via IP and transmission of events to several computers within the same corporate network (Intranet) or different networks.

In this type of connection, there is a 'master' computer that receives the information from all the control panels and sends it to other computers on the same network. From any computer, the same operations can be carried out as from the master computer. It is possible to share the event log of all the control panels or to have an independent log on each computer, saving only the events when it is operational. Also, you can share the configuration and maps or have an independent configuration for each computer.

COMPUTER REQUIREMENTS:

- Processor i3 or higher, 2.0 GHz or more
- Memory: minimum 1 GB with SQL Server Express (Version installed by the installer) 4 GB or more with other SQL versions
- Hard Disk: minimum 80 GB free
- USB ports for connection of the license dongle
- Optional: RS232 serial port for connection to the control panel
- Mouse and/or keyboard, optional speakers for events audio
- Ethernet network card for communication with control panels or other PCs
- Graphics card: minimum 512 MB of memory and Full HD
- Full HD monitor recommended
- Operating system recommended: Windows 10 Pro (minimum Windows 7 Pro)

FEATURES

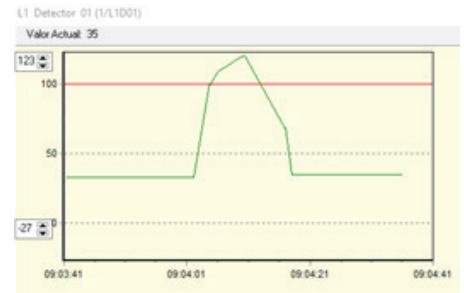
The installation's devices can be placed on BMP maps in different formats (800 x 600, 1024 x 768, 1920 x 1240 pixels, etc.) depending on the configuration of the screen. The representation of the sensors and input and output modules can be done using the extensive library of icons included with the software or by means of geometric shapes, being able to highlight an area of the map if there is a change of state in a device. In the installation maps, map changes, equipment counters in alarm, fault, cancelled, etc. can be linked. Optionally, the indication of the physical address of each unit can be enabled.

The software has a quick overview of the status of the devices in the loop. In this screen, the current condition of the sensors and input and output modules is indicated. By clicking on the selected device, we can access its location on the map or modify its settings.

The description of the devices can be received directly from the control panel, using the global import option, or a single import can be sent if only one or several devices have been modified in the control panel. In this way, the user does not have to re-enter the description of a device and its zone in the software.

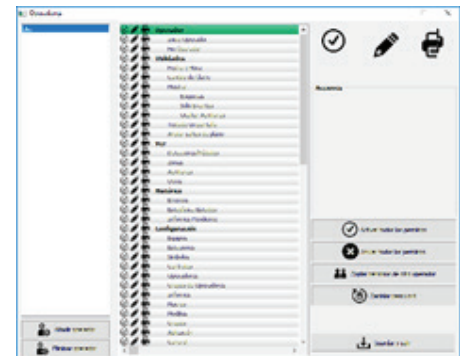


In the event of an alarm or any other event, we can make a graphic representation, in real time, of the condition of the sensor (ID3000) or temperature values in the zone (Sensa). In this way, we can quickly evaluate the status of the alarm and carry out actions on the sounder modules, even before the control panel performs the evacuation process.

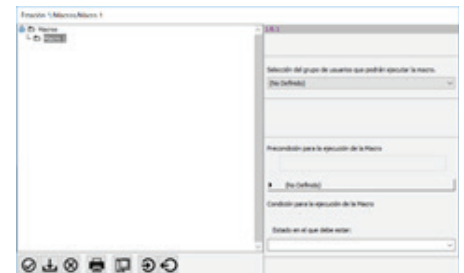


The log, of 'unlimited' capacity as it depends on the computer's hard disk, records any type of incident and saves the name of the active user at any time. The user can link a report of the action performed and view it later in the log. In the event log, you can filter by date, time, equipment, zones, type of event, etc. Alarm events will be highlighted in the selected colour (red by default). Also, each event can be linked to a specific colour to make later viewing easier.

The TG allows a wide range of operator hierarchies. Both in terms of the possibility of visualizing the different menus and the capacity to take certain actions such as Reset, Evacuate, Mute, etc..



The software also has actions called Macros, which allow the system to automatically or manually, by means of different events (alarms, faults, etc.) trigger a series of actions (activation of sounders, modules, cancellations, etc.).



Part Number	Description
TG-BASE	License-free USB key. Required to be ordered together with TG-C and/or TG-PLUS.
TG-C	Extra license to be added to the TG-BASE, it includes the possibility to connect to a conventional control panel, analogue control panel of a single loop or up to 10 compatible Vesda aspirating detectors. If you want to add this licence to an existing TG, you must indicate the number of the existing TG-BASE. See equivalence table on our website
TG-PLUS	Extra license to be added to the TG-BASE, including the possibility to connect to a larger analogue control panel, Modbus or an additional PC. If this license is to be added to an existing TG, the existing TG-BASE number must be provided. See equivalence table on our website
CTG	License for connection to remote control station

NOTA: For more information on the part numbers compatible with the available systems, please refer to the equivalence table in the manuals menu at www.notifier.es